



Contact: Tracy Ryan: 0151 511 8661 tracy.ryan@halton.gov.uk



Help, Advice & Support

- Information, Advice & Support
- Factsheets – Complaints, Appeals
- Themed or Specialist Support
- Staying Safe...
 - At Home
 - In the Community
 - Online



Leisure

- What's on?
- Groups, Sports & Notice Board
- Specialist Activities & Information



EHC Plan

- Changes to SEND Explained
- Education, Health & Care Plan, Conversions, Personal Budgets & Young People in Custody Explained
- What did you think about the EHC Plan Process?
- Assessment Process, Timescales & Panel Dates
- Request Forms, Supplementary Information & Annual Reviews
- Factsheets - Complaints, Appeals



Health

- Emergency Health Crisis Situations
- Health & Wellbeing
- Local Data (JSNA), Reports & Case Reviews
- Housing & Equipment
- Medical Conditions
- Healthcare Information



Education & Childcare

- Contact Details
- Factsheets – Complaints, Appeals
- Disability Access Fund Early Years
- Strategies & Local Data
- Education & Childcare
- SEND Specialist Support
- Resources
- Other School Support



Transport

- Blue Badge, Disabled Parking & Shopmobility
- Halton DisabledGo
- School/College Transport
- Public Transport- Bus Info
- Roadworks & Local Travel Updates



Children's Services & Social Care

- Keeping Safe
- Children's Social Care & Family Services
- Children & Young People with SEND/Disabilities
- Young Carers



Get Involved

- Local Peer Support Groups



Preparing for Adulthood

- What does this mean for you?
- Employment & Education
- Independent Living
- Community Inclusion
- Health



Training & Events

- Online Training
- Training & Workshops
- Events



You Said, We Did

- Feedback & Improvements



Case Studies

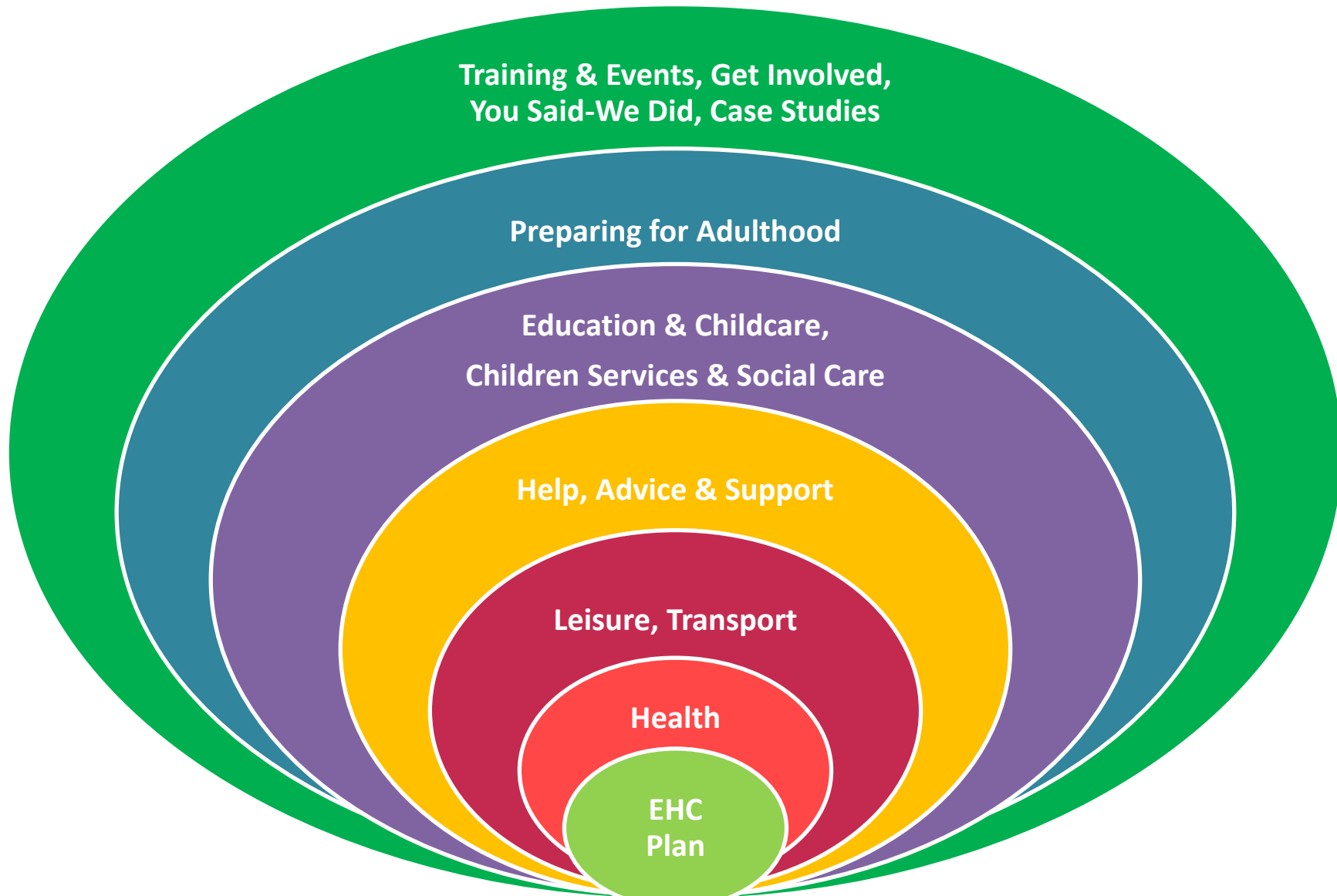
- Success Stories
- Personal Experiences

You'll find lots more online at:

www.halton.gov.uk/localoffer



Halton's Local Offer



A website for everyone, want to find out more? Visit: www.halton.gov.uk/localoffer

Contact: Tracy Ryan: 0151 511 8661 tracy.ryan@halton.gov.uk